

Chaudière Falls

by

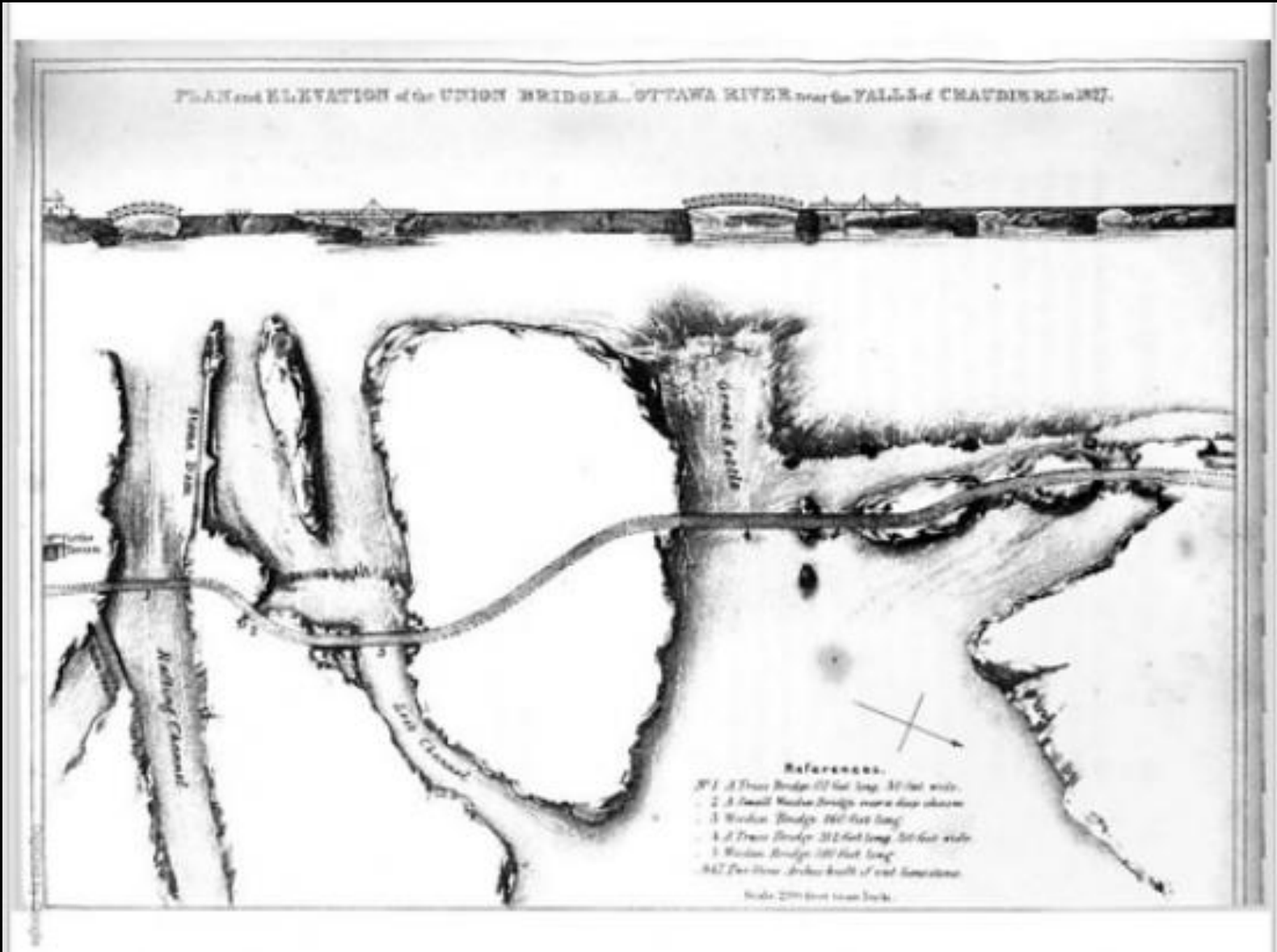
Debbie Pinard

History

- The historical significance of Chaudière Falls predates Canada
- The Algonquin consider Chaudière Falls a sacred site due to its significance as a meeting place, portage site, and trade route
- At 200' wide with a 49' drop, it's cauldron-like shape with the spray rising from the churning water inspired the Algonquins to name the falls "Asticou," meaning "kettle" or "boiler"
- On June 14, 1613 Samuel de Champlain wrote about the power of the falls in his journal, calling the falls "Chaudière" (also meaning "kettle")

History

- In the 1800s, the falls were closed off to the public due to the damming of the Ottawa River to provide the water power to lumber mills and factories
- It became home to Canada's oldest hydroelectric station, still in operation today
- In 2018 Hydro Ottawa opened the historic Chaudière Falls site to the public, and provided guided tours of its newest 29-megawatt hydroelectric station



This shows the initial 1832 dam built by George Buchanan

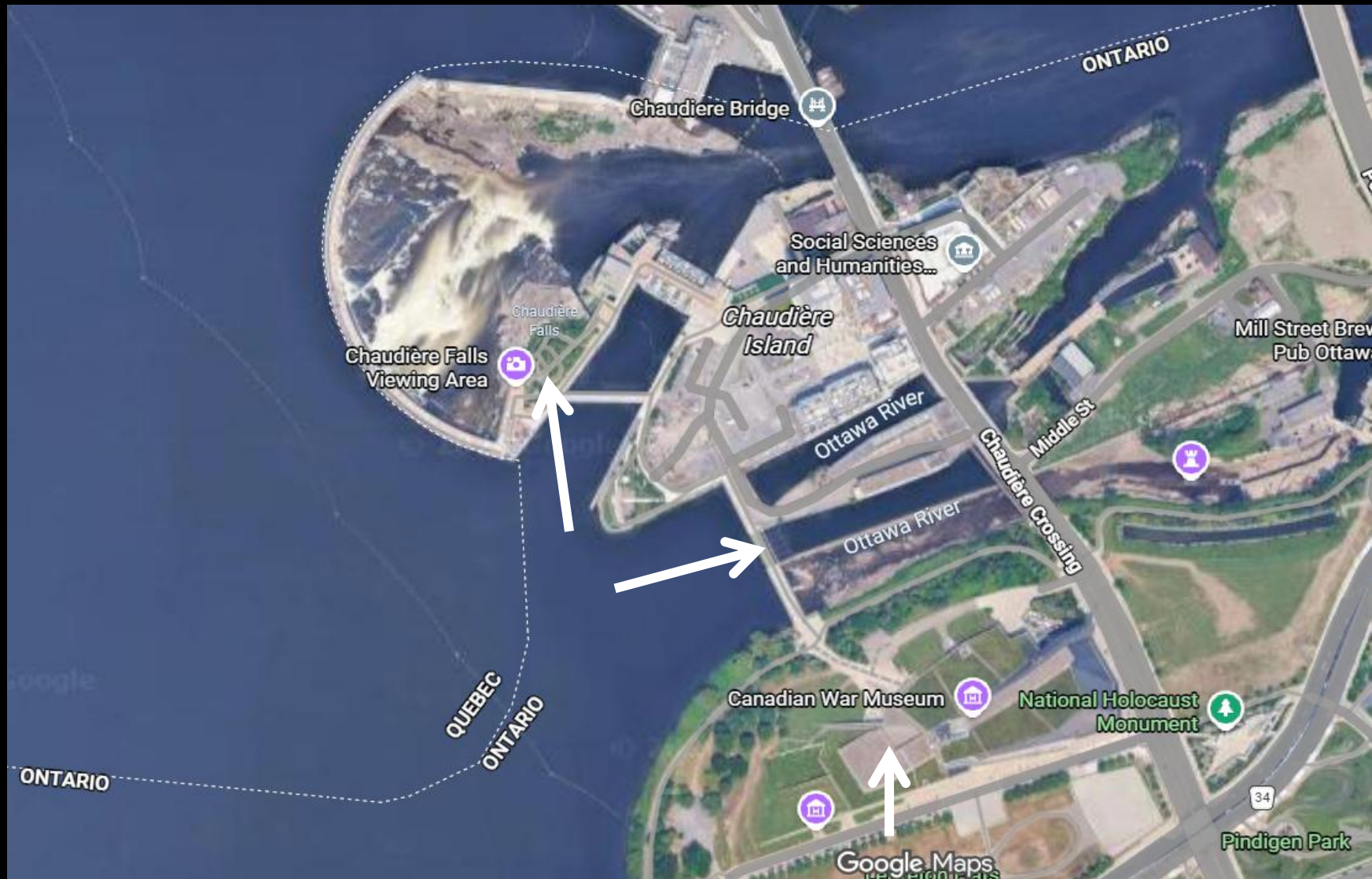


CHAUDIERE FALLS. OTTAWA.



CHAUDIERE FALLS, OTTAWA.





The ring dam was built in 1908. It consists of 50 sluiceways that manage water levels.



























Links

- https://youtu.be/Z-HZG_eLq7Q
- <https://hydroottawa.com/en/blog/discover-chaudiere-falls-where-ottawas-past-and-future-unite>
- <https://www.historicalsocietyottawa.ca/publications/ottawa-stories/changes-in-the-city-s-landscape/the-grand-chaudiere-dam>

Andrew Haydon Park

History

- Nepean Carleton Keyes was established when Reeve Andrew Haydon expropriated waterfront land from developers to preserve it for public use
- The park was landscaped by architect Donald W. Graham
- It was renamed in 1979 to honor Haydon for his vision in protecting the waterfront
- The Nepean sailing club's facility and nearby harbor and were opened in 1990, becoming a core component of the area
- The park features a man-made water feature named Keeley Falls, dedicated to long-serving City Parks Superintendent Tom Keeley



Harry Kingston Point

NSC Lighthouse

Nepean Sailing Club

Graham Bay

The Nepean Concert Band

Andrew Haydon Park

Beltown Park

Ottawa River Pathway

Woodridge Crescent

Bayshore Park

Overdose Beauty Clinic

Petro-Canada

Kahaani - Modern Indian Eatery

Stillwater Dr

Carling Ave

Ararat Ct

38

16

Oakl

Taj I

Spring

© 2026 Google



Andrew Haydon Water
Park and Playground
Temporarily closed

Google Maps

Carling Ave



Trail







Summer



Andrew Haydon Water Park and Playground
Temporarily closed

Carling Ave

Google Maps



Trail













Fall

© 2026 Google



Andrew Haydon Water Park and Playground
Temporarily closed

Carling Ave

Google Maps



Trail











© 2026 Google

Andrew Haydon Water Park and Playground
Temporarily closed

Carling Ave
38

Google Maps

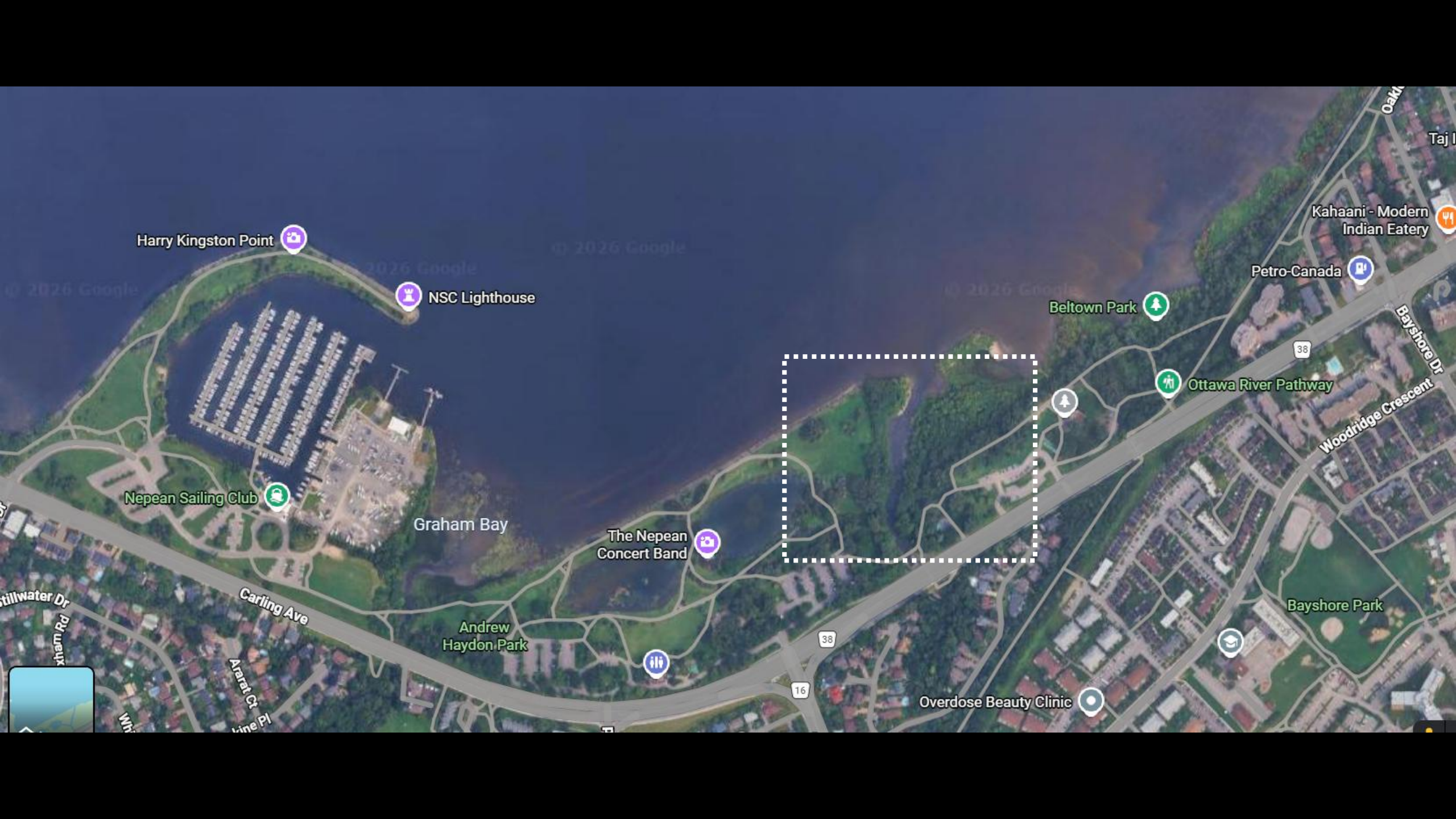














The Nepean
Concert Band

© 2024



Carling Ave

38

B









The Nepean
Concert Band



Carling Ave

38

B

© 2024









The Nepean
Concert Band

© 2024

Carling Ave

38

B













Harry Kingston Point

NSC Lighthouse

Nepean Sailing Club

Graham Bay

The Nepean Concert Band

Andrew Haydon Park

Beltown Park

Ottawa River Pathway

Petro-Canada

Kahaani - Modern Indian Eatery

Woodridge Crescent

Bayshore Park

Overdose Beauty Clinic

Carling Ave

Ararat Ct

16

38

38

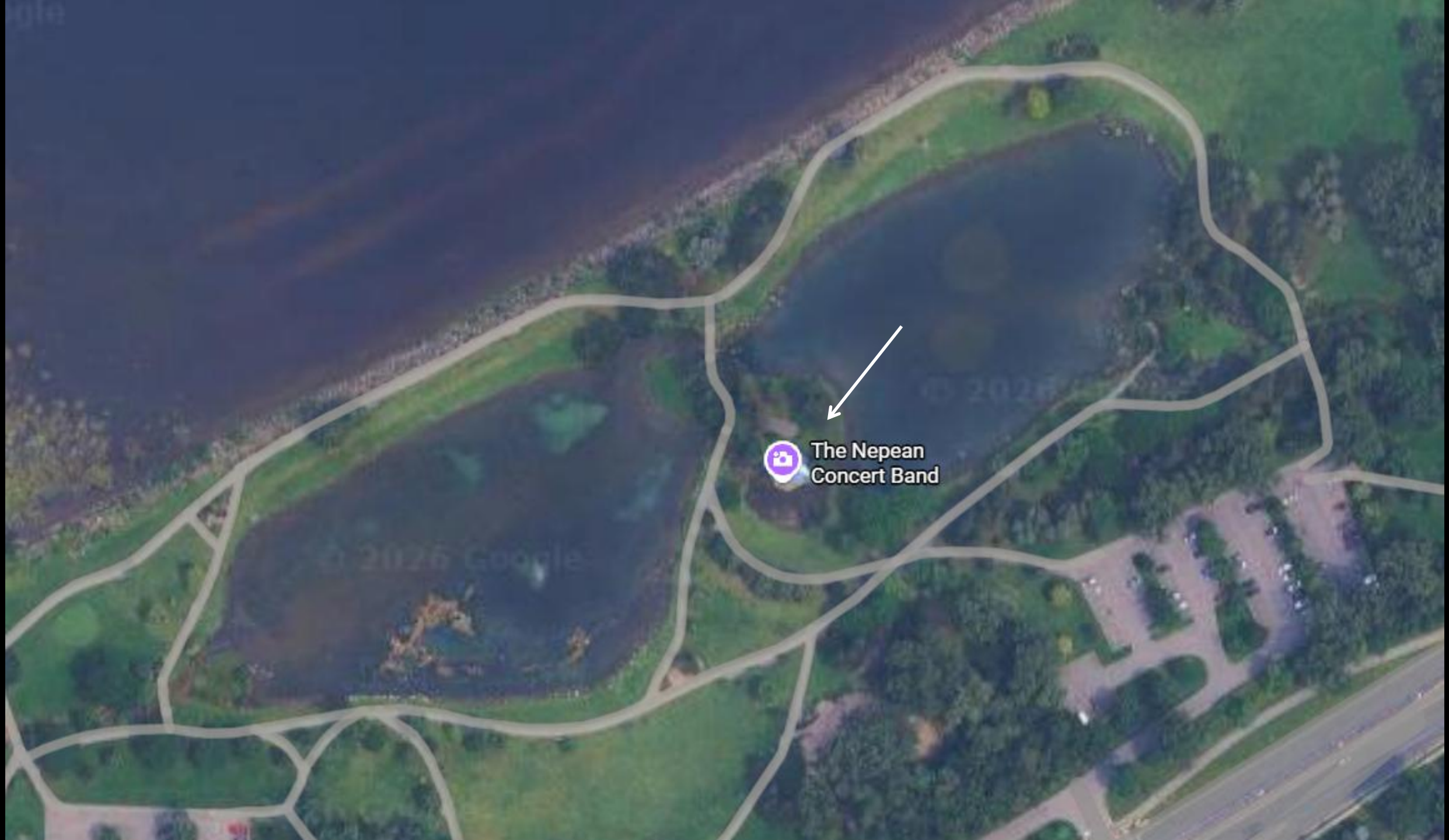
Stillwater Dr

xham Rd

Win

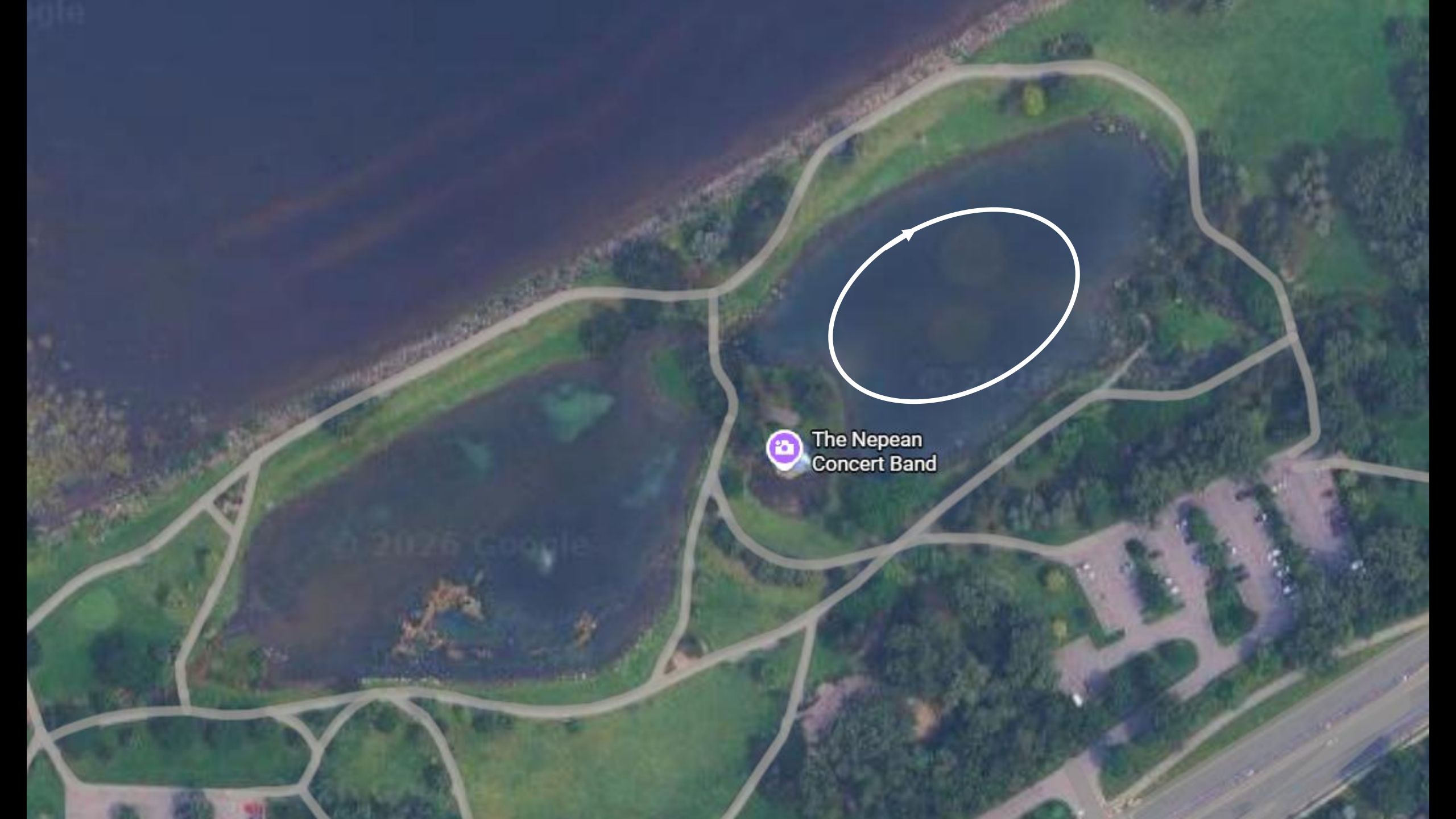
Oak

Taj I



The Nepean
Concert Band

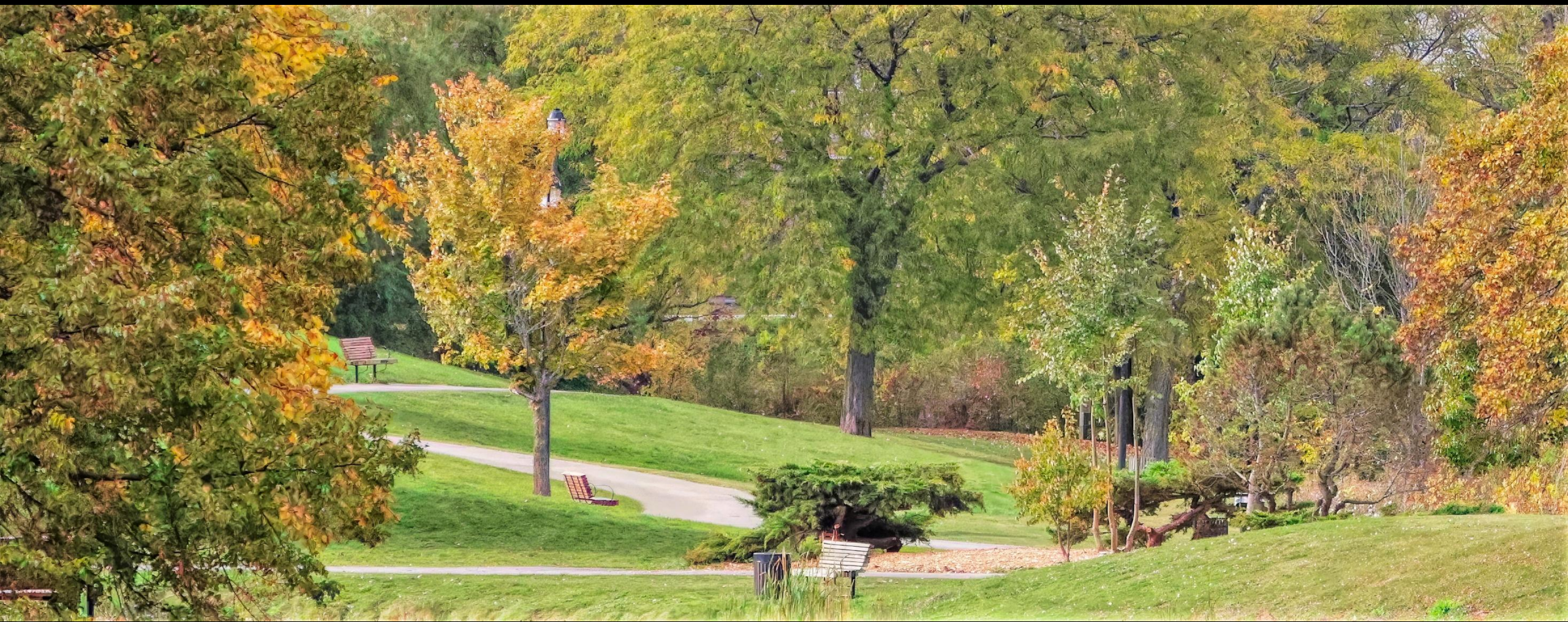




The Nepean
Concert Band

© 2025 Google





























DO NOT
FEED THE WILDLIFE



Harry Kingston Point

NSC Lighthouse

Nepean Sailing Club

Graham Bay

The Nepean
Concert Band

Andrew
Haydon Park

Beltown Park

Ottawa River Pathway

Petro-Canada

Kahaani - Modern
Indian Eatery

Woodridge Crescent

Bayshore Park

Overdose Beauty Clinic

Stillwater Dr

Carling Ave

Ararat Ct

Oak

Taj I

38

16

38

38





The Nepean
Concert Band

















































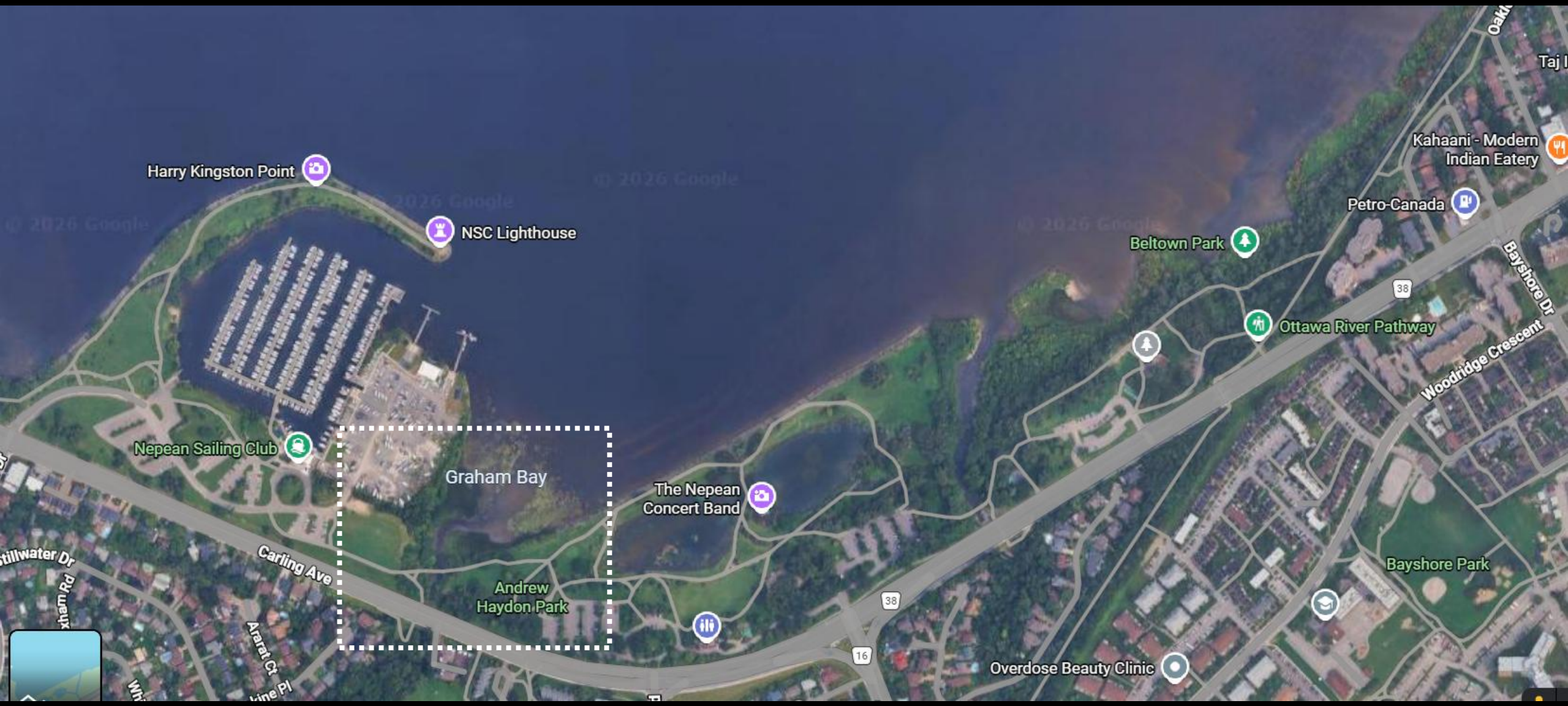












Harry Kingston Point

NSC Lighthouse

Nepean Sailing Club

Graham Bay

The Nepean Concert Band

Andrew Haydon Park

Beltown Park

Ottawa River Pathway

Petro-Canada

Kahaani - Modern Indian Eatery

Woodridge Crescent

Bayshore Park

Overdose Beauty Clinic

Stillwater Dr

Carling Ave

Ararat Ct

Oakl

Taj I

38

16

38

© 2026 Google

© 2026 Google

© 2026 Google

© 2026 Google

Graham Bay

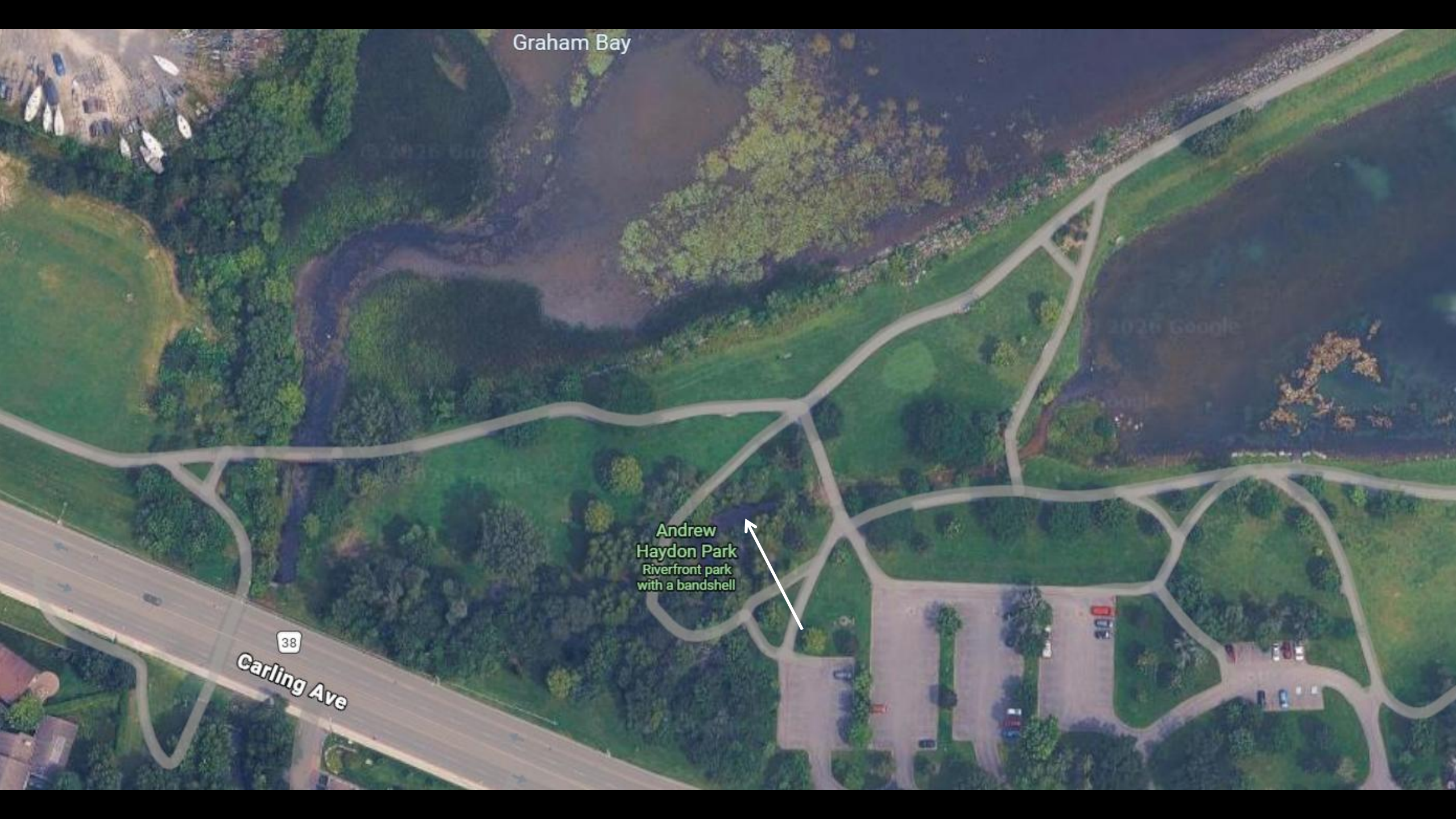
© 2025 Google

Andrew
Haydon Park
Riverfront park
with a bandshell



38

Carling Ave

















Graham Bay

Andrew
Haydon Park
Riverfront park
with a bandshell

38
Carling Ave



























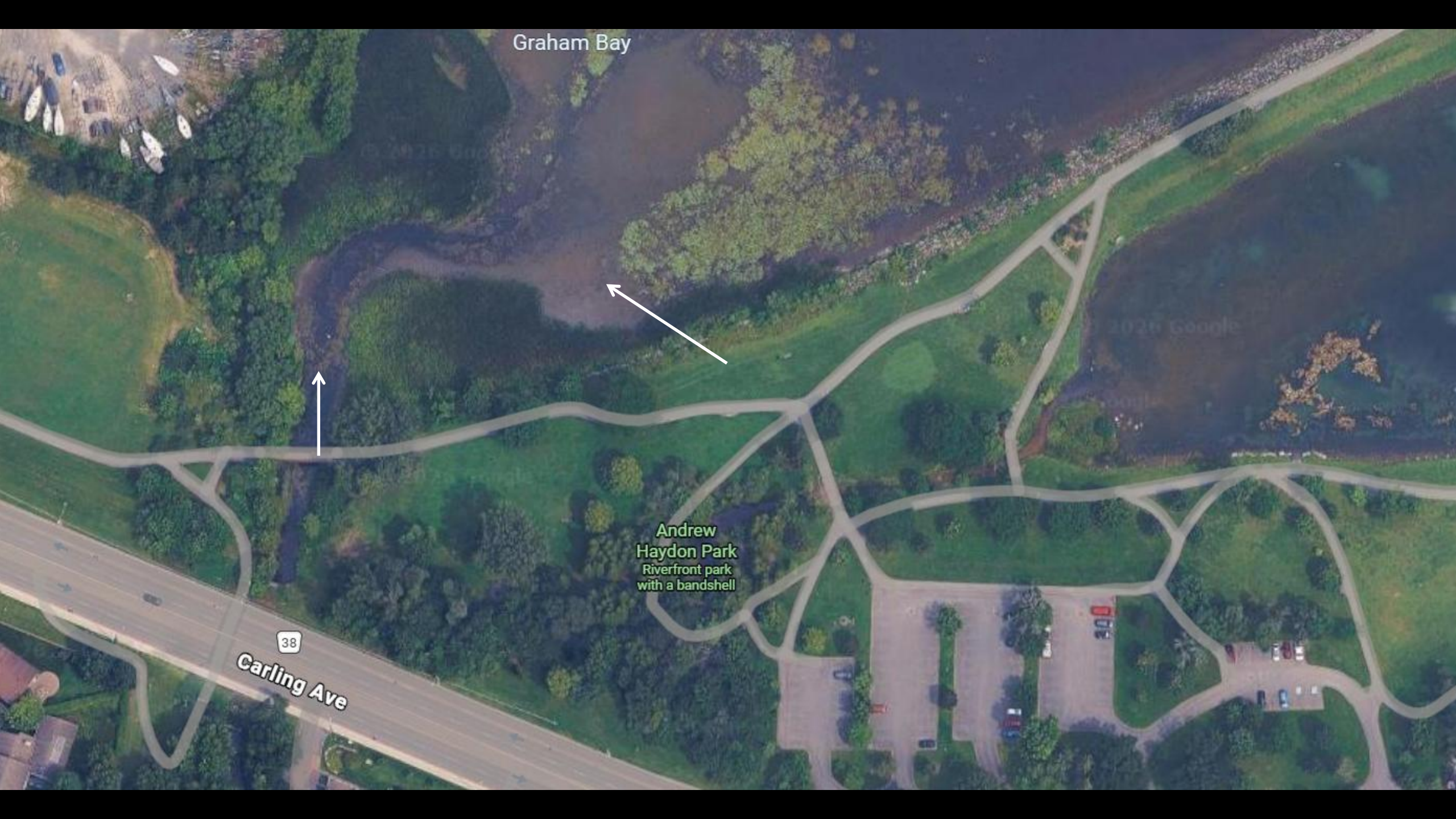
Graham Bay



Andrew
Haydon Park
Riverfront park
with a bandshell

38

Carling Ave





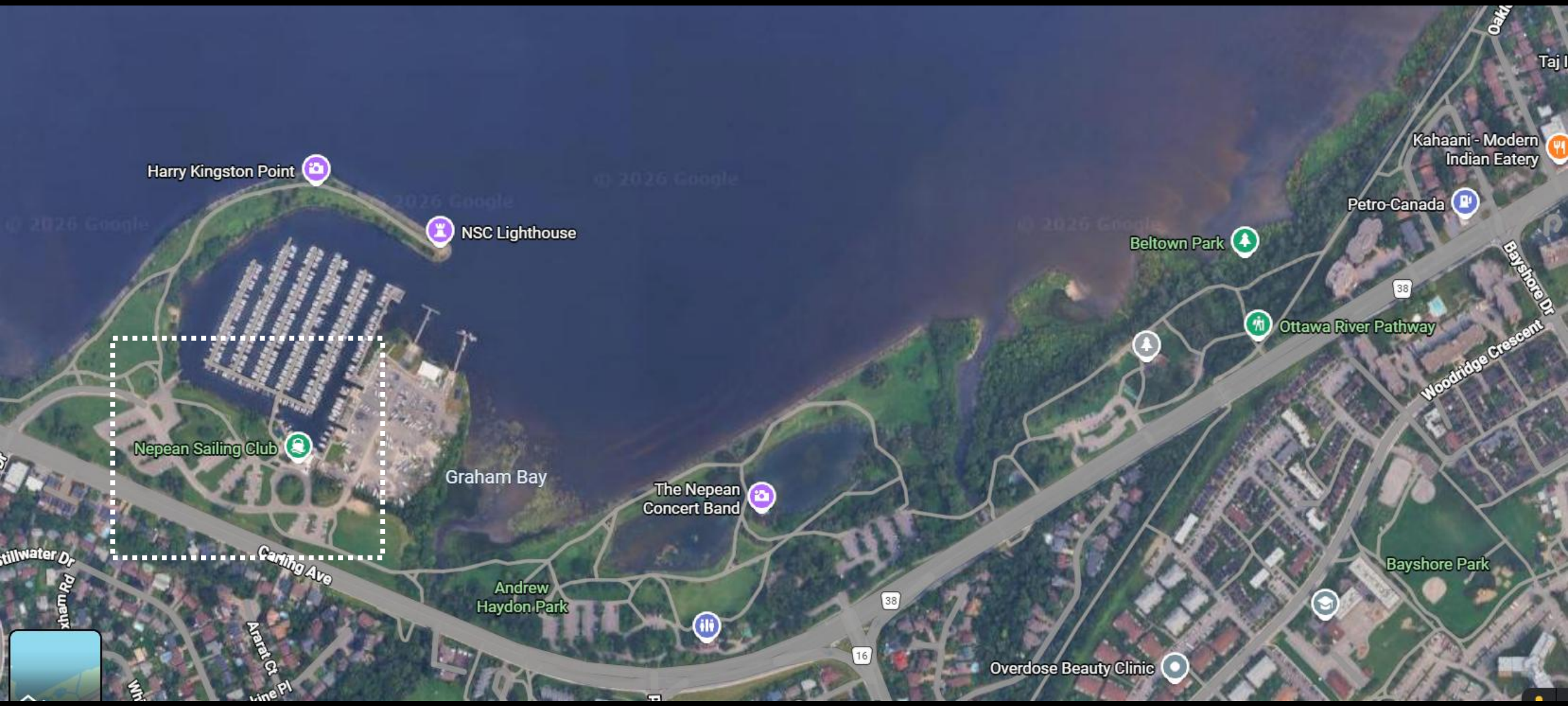












Harry Kingston Point

NSC Lighthouse

Nepean Sailing Club

Graham Bay

The Nepean Concert Band

Andrew Haydon Park

Beltown Park

Ottawa River Pathway

Petro-Canada

Kahaani - Modern Indian Eatery

Woodridge Crescent

Bayshore Park

Overdose Beauty Clinic

Stillwater Dr

Carling Ave

Ararat Ct

38

16

38

Oakl

Taj I

© 2026 Google

© 2026 Google

© 2026 Google

© 2026 Google



NSC Lighthouse



Dick Bell Park



Purple Martin Sanctuary



Nepean Sailing Club



3 Bedale Drive Apartment

Carling Ave



Carling

Graham Bay







The End

